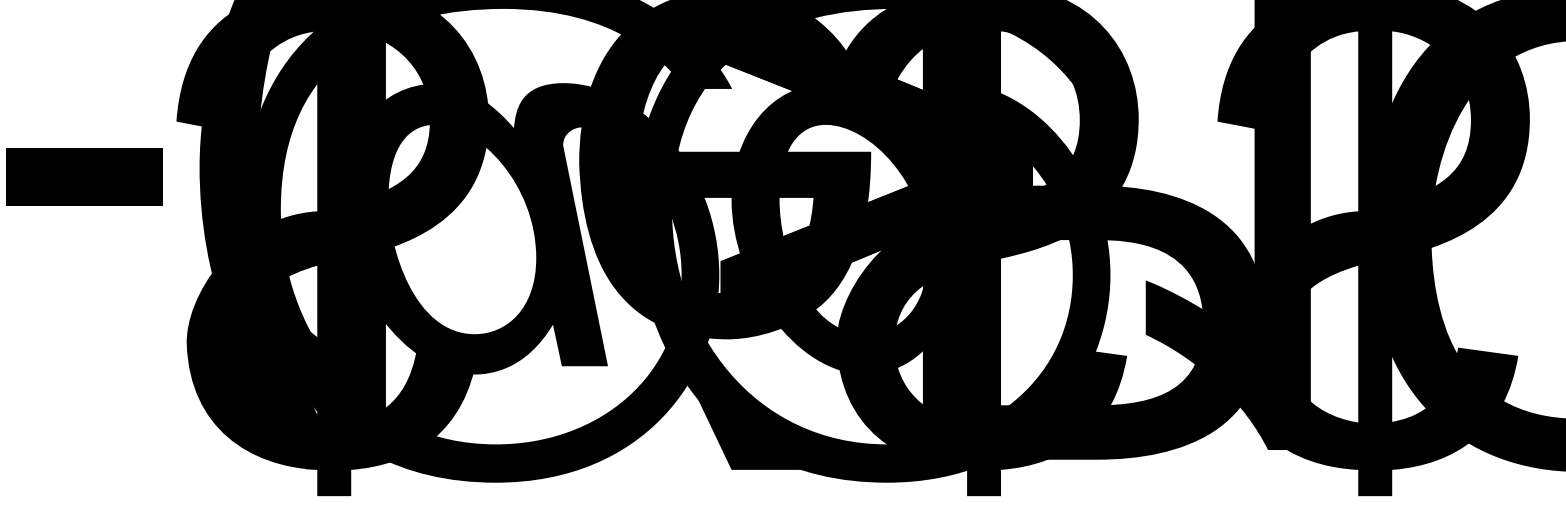


2020 年度

环境、社会和治理报告
ENVIRONMENTAL, SOCIAL GOVERNANCE REPORT

华越镍钴（印尼）有限公司



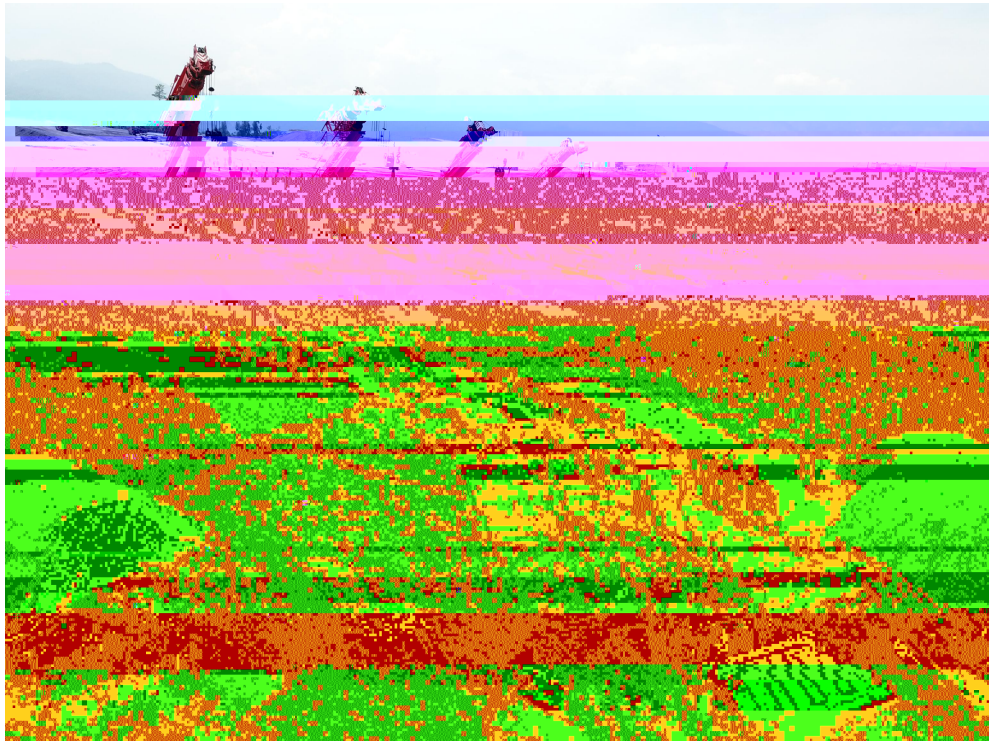
X@

Yf
p•\$XÑ" @ @ s Eq
l @s(1

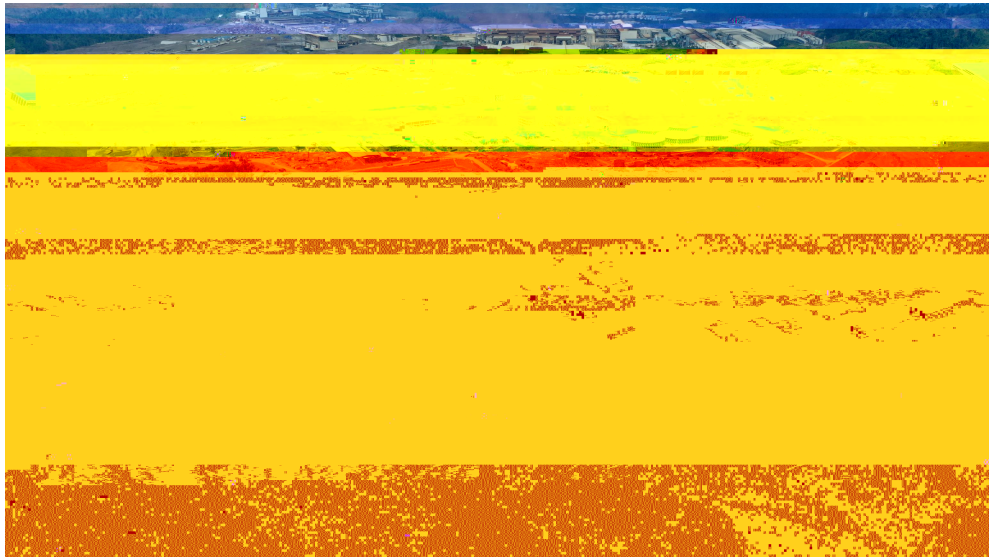
%@.-@ò A@ @A f @ §òò€

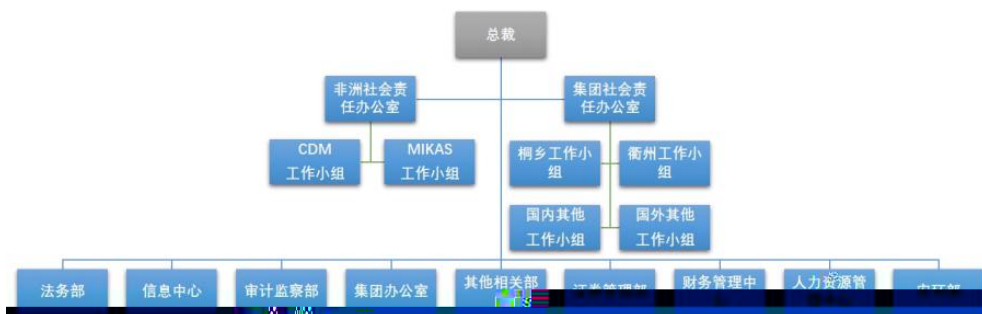
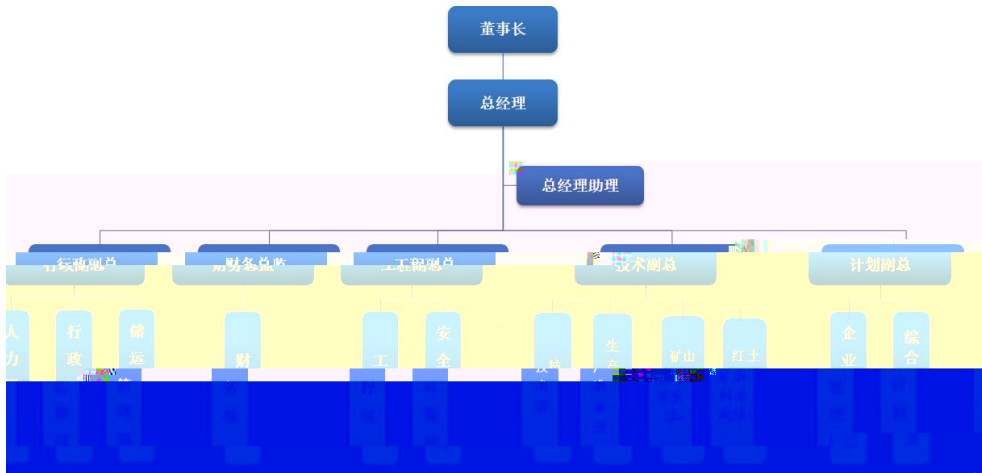
@ò C T " 1 " w ~ 0
@ò @ò C # € V # € V " X C
@ò C T " 1 " w ' \$ Q @

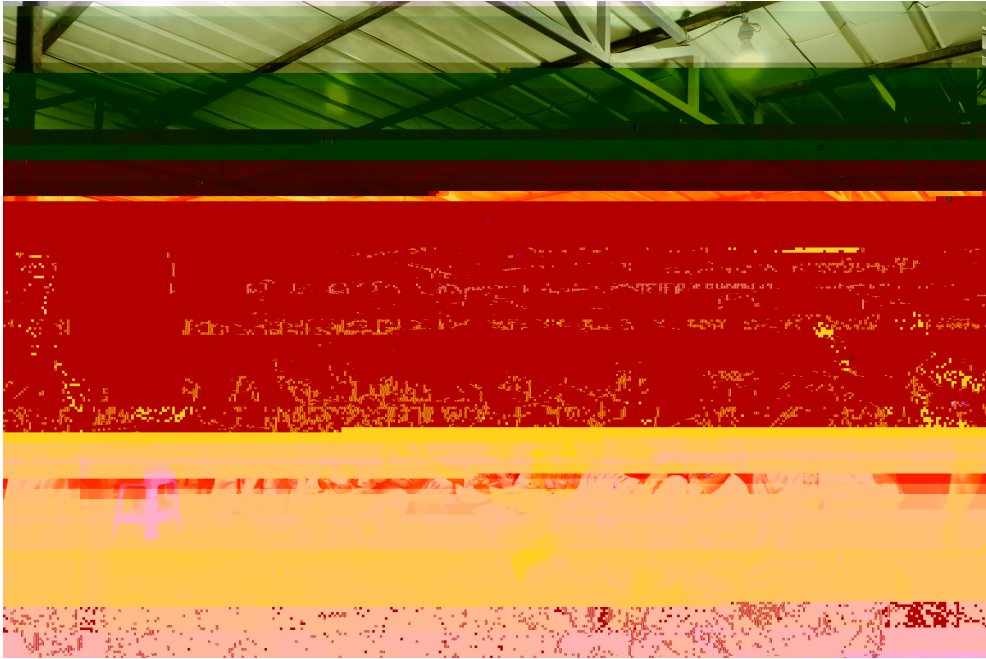
@ò C T " 1 " w %o















实质性议题分析矩阵



○

○

○

○

○

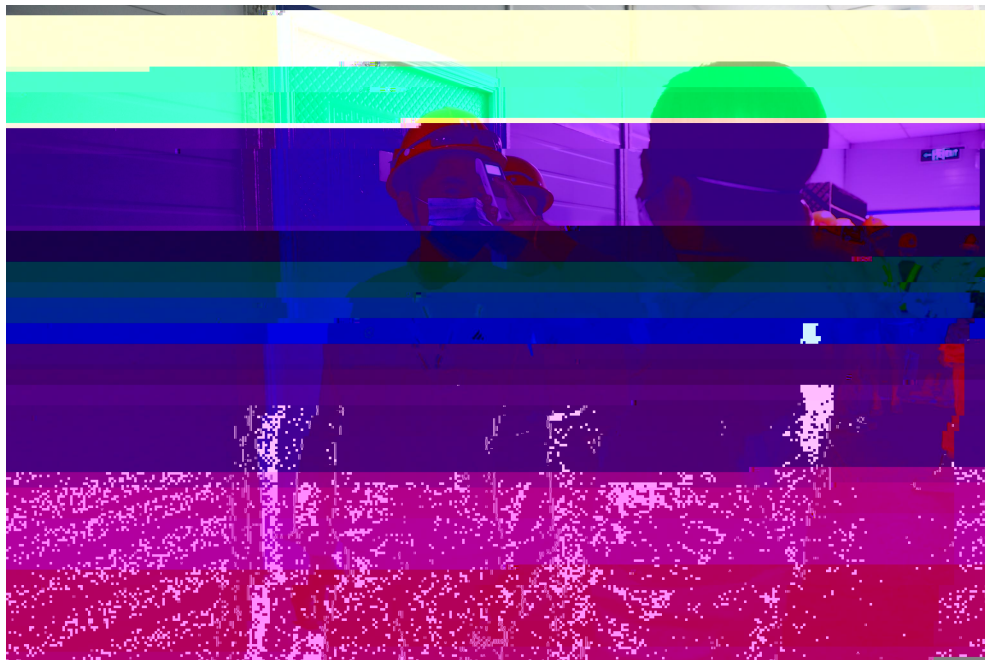
○

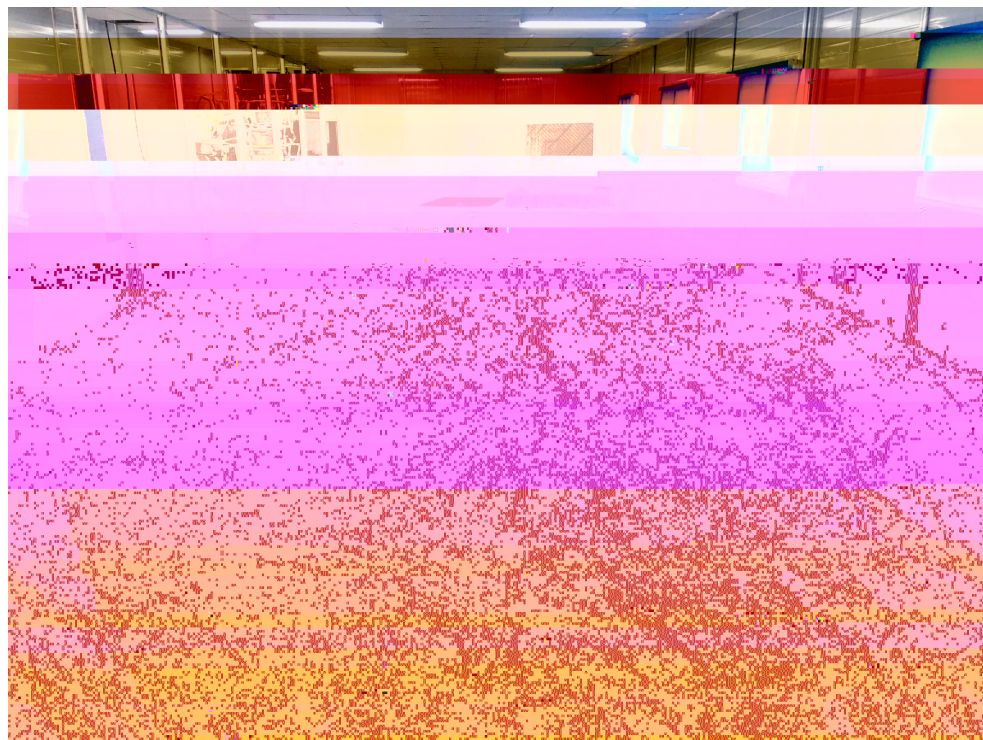
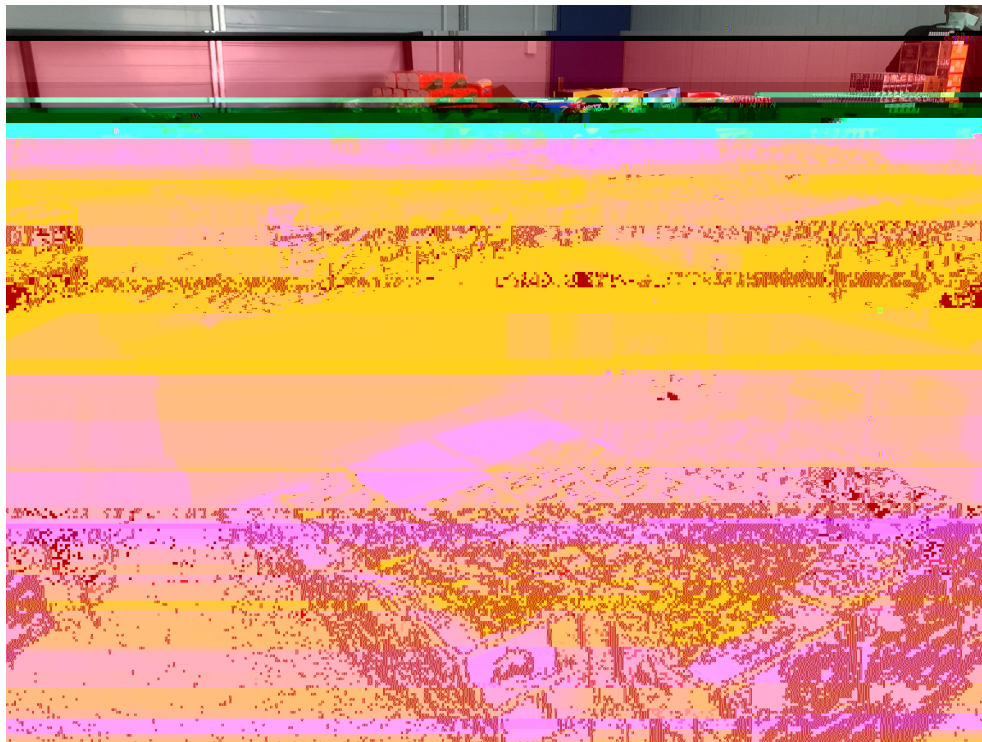
○

○

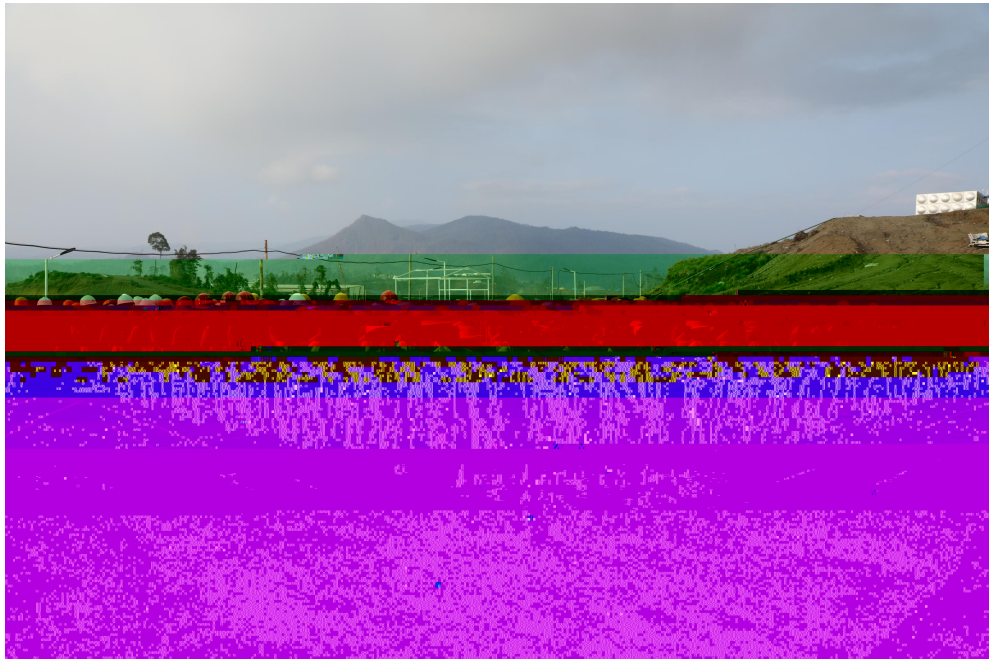
○

○

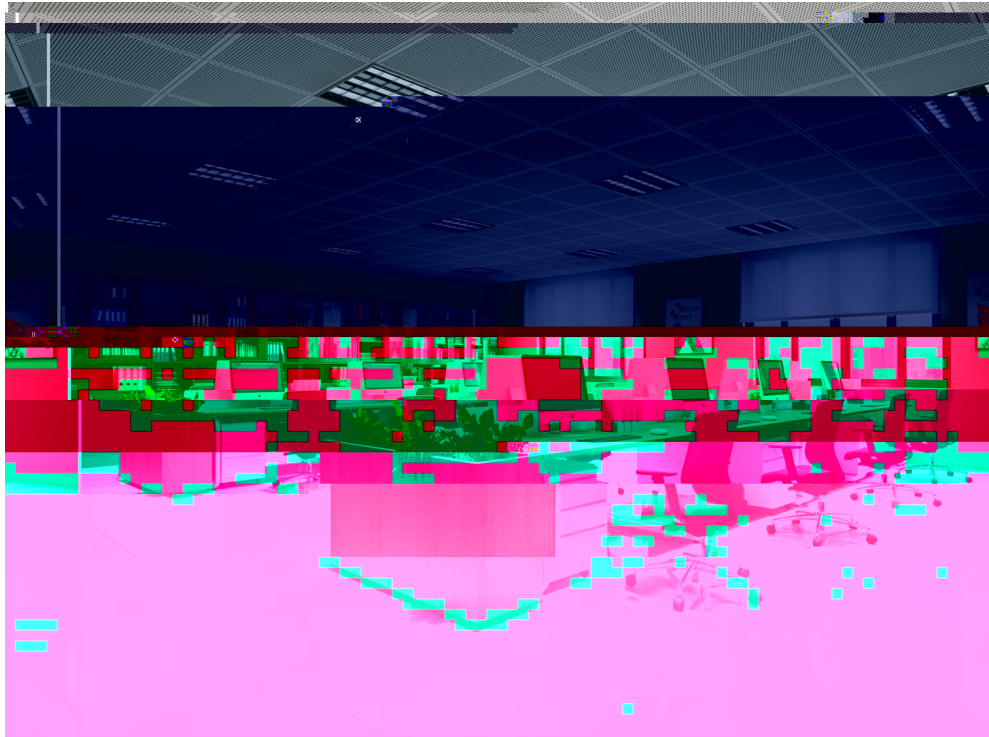


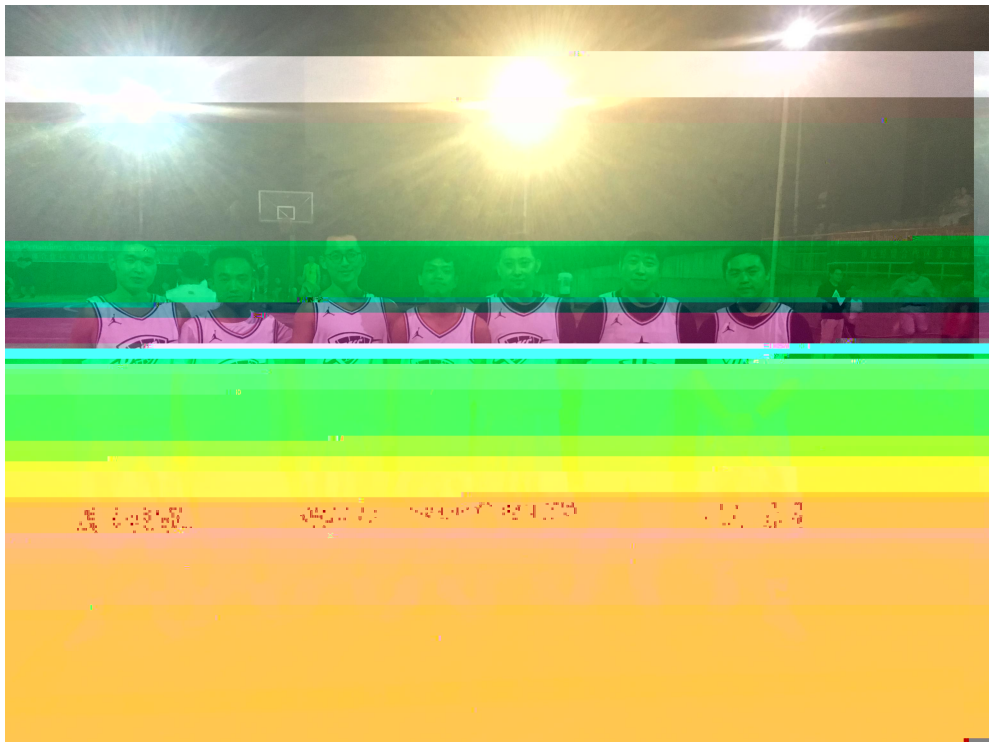
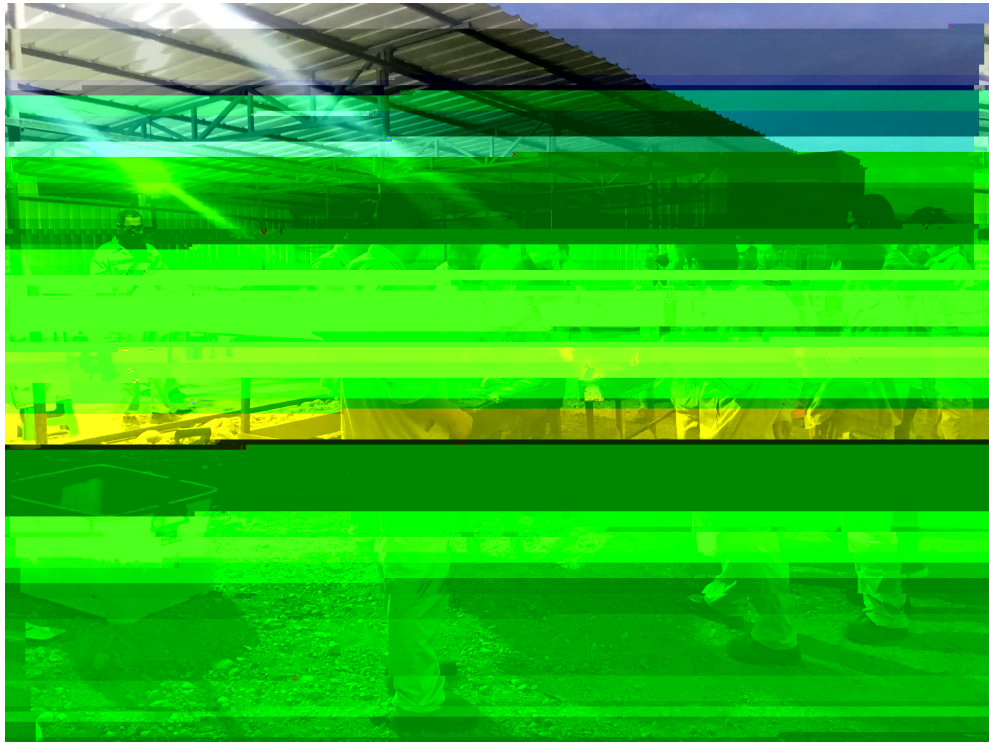


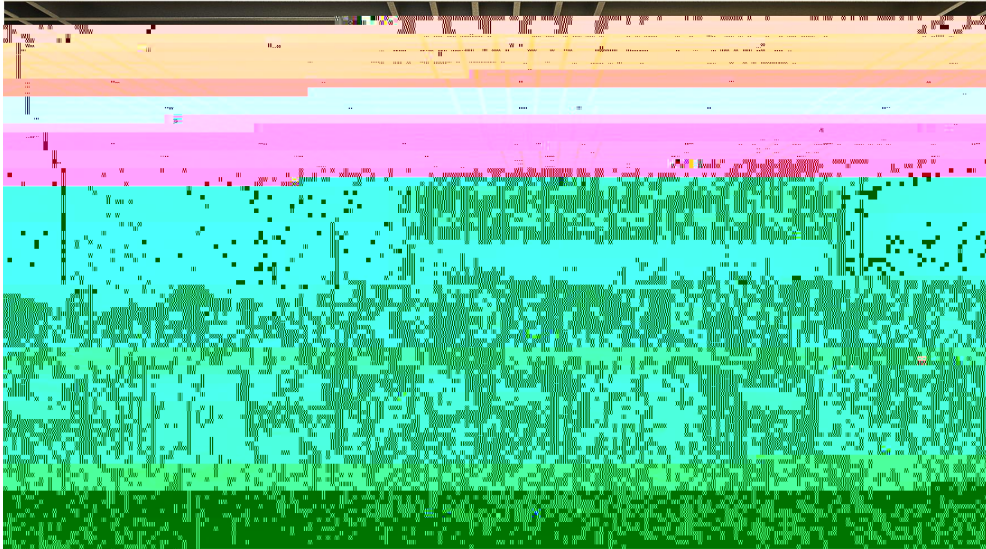
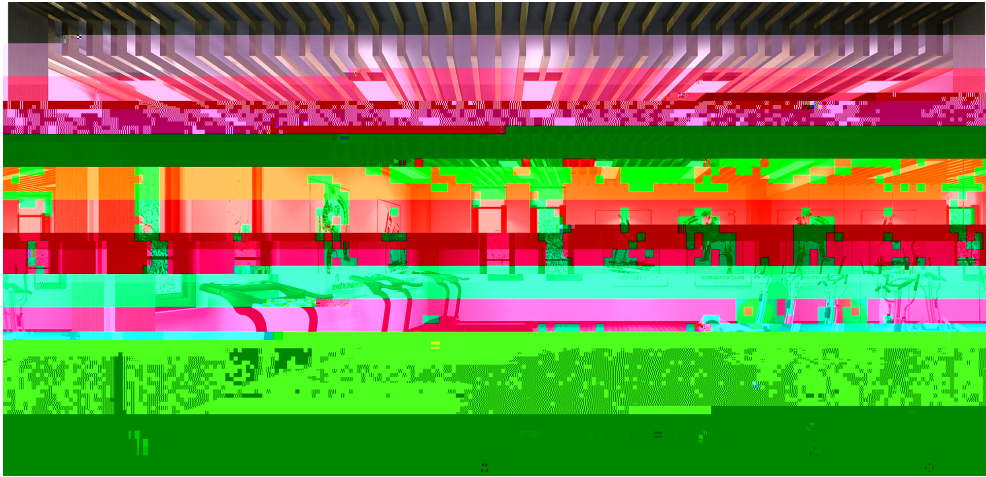


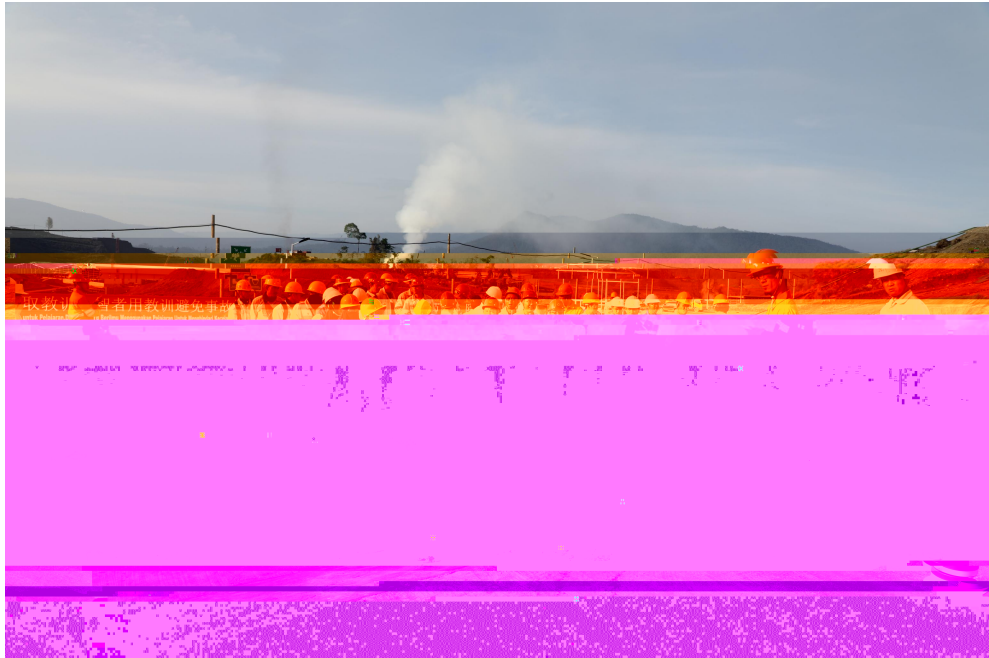




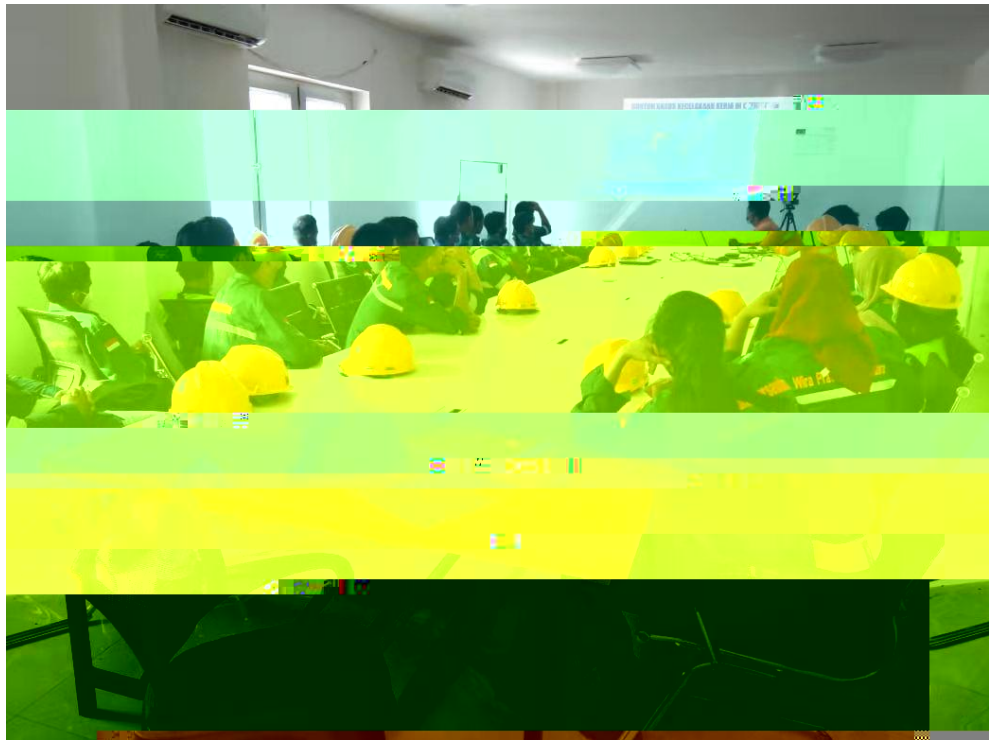


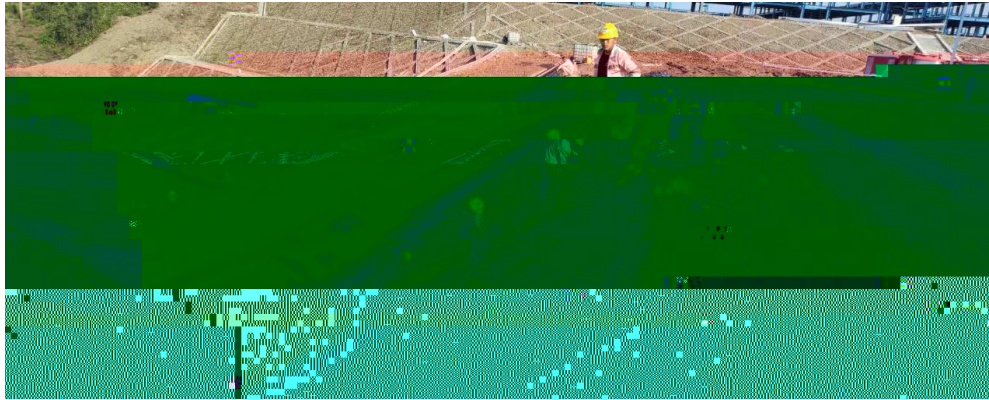


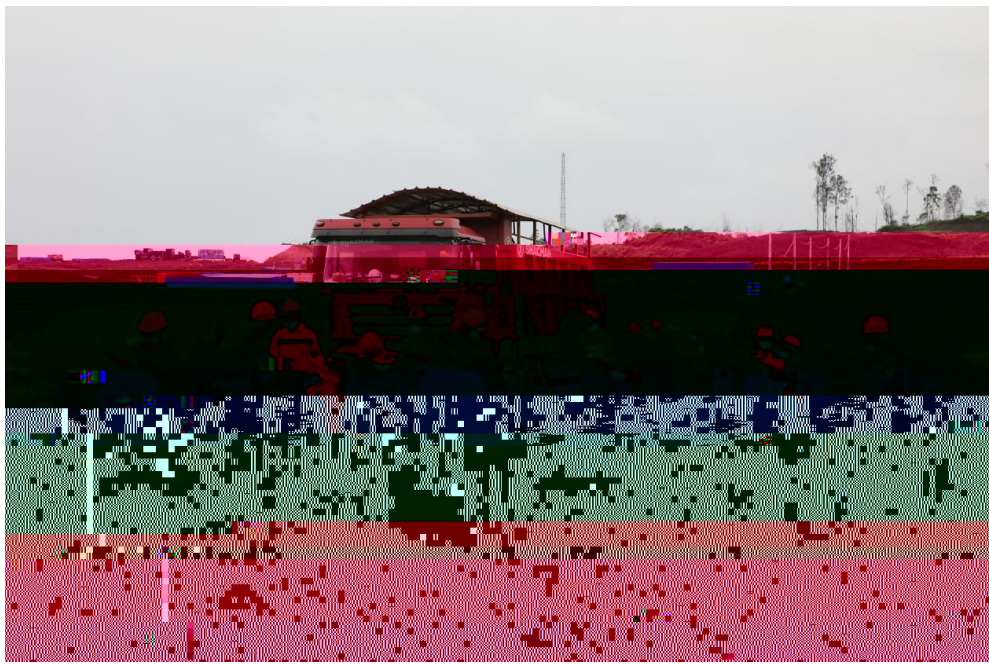














ESG Report



HUAYUE